

# Dick's Restaurant Supply

www.dicksrestaurantsupply.com

2963 First Avenue South  
Seattle, WA 98134  
800-294-7598  
206-382-0160  
206-382-0254 (FAX)

2102 140th Avenue NE  
Bellevue, WA 98005  
877-892-1819  
425-289-0680  
425-289-0683 (FAX)

324 Chenoweth Street  
Mt. Vernon, WA 98273  
877-821-5335  
360-848-0259  
360-848-0359 (FAX)



## Camshelving® Elements Series Starter Units

- Composite material is as strong as steel
- Flexible design fits any space
- Shelving for life – Non-corrosive construction allows usage in wet or dry environments and in temps from -36° to 190°F
- Lifetime warranty against rust and corrosion
- Shelf plates protected with Camguard® antimicrobial
- Includes vented shelf plates for 4 shelves, 4 posts, 8 stationary traverses, stationary dovetails and instructions

CODE	DIMENSIONS	PRICE EA.
ESU183672	18" x 36" x 72"h	\$ 242.00
ESU184872	18" x 48" x 72"h	\$ 282.00
ESU186072	18" x 60" x 72"h	\$ 331.00
ESU213672	21" x 36" x 72"h	\$ 264.00
ESU214872	21" x 48" x 72"h	\$ 309.00
ESU216072	21" x 60" x 72"h	\$ 365.00
ESU243672	24" x 36" x 72"h	\$ 271.00
ESU244872	24" x 48" x 72"h	\$ 320.00
ESU246072	24" x 60" x 72"h	\$ 365.00

# CAMBRO®

## TRUSTED FOR GENERATIONS™

### Camwear™ Round Food Storage Containers & Seal Lids

- Store or transport ingredients, ready-to-serve or partially prepared foods
- Durable clear, polycarbonate construction is virtually unbreakable
- Withstands temp. of -40° to 210°F
- Food acids, oils and alcohol won't stain or harm containers
- Translucent lids

CODE	SIZE	CASE PACK	PRICE EA.
RFSCW1	1 qt	12	\$ 3.45
RFSCW2	2 qt	12	\$ 4.76
RFSCW4	4 qt	12	\$ 8.03
RFSCW6	6 qt	12	\$ 9.40
RFSCW8	8 qt	12	\$ 11.91
RFSCW12	12 qt	6	\$ 16.67
RFSCW18	18 qt	6	\$ 22.87
RFSCW22	22 qt	6	\$ 26.75

CODE	SEAL LIDS	CASE PACK	PRICE EA.
RFS1SCPP	Fits 1 qt	12	\$ 1.10
RFS2SCPP	Fits 2 & 4 qt	12	\$ 1.70
RFS6SCPP	Fits 6 & 8 qt	6	\$ 1.75
RFS12SCPP	Fits 12, 18 & 22 qt	12	\$ 3.70



### StoreSafe® Food Rotation Labels

- 100% biodegradable
- Eliminates scraping both adhesive and label dissolve completely in less than 30 seconds off any storage container placed in dishwasher or under running water



CODE	DESCRIPTION	CASE PACK	PRICE CS.
1252SLB250	1¼" x 2" Half Size Label, 250 Labels/Roll, Bulk Dispenser Pack	24	\$ 197.00
23SL	2" x 3" Full Size Label, 100 Labels/Roll, Blister Pack	20	\$ 214.00
23SLB250	2" x 3" Full Size Label, 250 Labels/Roll, Bulk Pack	24	\$ 396.00
23SLB6250	2" x 3" Full Size Label, 250 Labels/Roll, Bulk Dispenser Pack	6	\$ 103.00

## Security Cage for Camshelving®

- Provides safe storage for valuables or personal items
- Unique modular design retrofits one shelf at a time or an entire shelving unit
- Fits U.S. Standard Camshelving Units 24" w x 48" l
- Safe for use in coolers and freezers



CODE	DIMENSIONS	PRICE EA.
CSSC2448	42½" l x 25¼" w x 18" h	\$ 349.00








### Camshelving® Starter Kits

- Ideal for walk-in refrigerators and freezers
- Weldless and rust proof – can be used in wet areas
- Shelf plates with Camguard™ antimicrobial to inhibit fungus and bacteria that cause odors, stain and product degradation
- Color: Speckled Gray

CODE	STARTER UNITS W/4 SHELVES & 4 POSTS	PRICE EA.
CSU48367	18" x 36" x 72"h, Holds 800lb Per Shelf	\$ 316.00
CSU48487	18" x 48" x 72"h, Holds 800lb Per Shelf	\$ 367.00
CSU44367	24" x 36" x 72"h, Holds 600lb Per Shelf	\$ 353.00
CSU44487	24" x 48" x 72"h, Holds 800lb Per Shelf	\$ 417.00

CODE	ADD ON UNITS W/4 SHELVES & 2 POSTS	PRICE EA.
CSA48367	18" x 36" x 72"h	\$ 255.00
CSA48487	18" x 48" x 72"h	\$ 307.00
CSA44367	24" x 36" x 72"h	\$ 291.00
CSA44487	24" x 48" x 72"h	\$ 354.00












## Heated Ultra Pan Carriers® & Ultra Camcarts®

- Gentle heat (150° to 165°F) warms and maintains food moisture
- Excellent temp. retention — even when unplugged for hours
- Tough, polyethylene exterior stays cool to the touch • 110V

CODE	HEATED PAN CARRIER — 18½" x 26¾" x 24⅞"	PRICE EA.
UPCH400	1 Compartment	\$ 686.00
UPCHD400	Replacement Door for UPCH400/Retrofit UPC400 Door	\$ 439.00

CODE	HEATED CAMCART — 20½" x 27⅞" x 54"	PRICE EA.
UPCH800	2 Compartment	\$ 1654.00
UPCHT800	2 Compartment, Top Door Only Heated	\$ 1259.00
UPCHTD800	Replacement Top Door for UPCH800/ Retrofit UPC800 Top Door	\$ 480.00
UPCHBD800	Replacement Bottom Door for UPCH800/ Retrofit UPC800 Top Door	\$ 480.00

## Ultra Pan Carrier®, Camcarrier® & Camcarts®

- Tough, 1-piece seamless, double-wall, polyethylene construction
- Air tight gaskets and full swing 270° doors • Molded-in handles and bumpers
- Holds 2½" to 8" deep full size pans
- Casters: 2 fixed, 2 swivel and 1 with brake

CODE	ULTRA PAN CARRIER — 1 Compartment	PRICE EA.
UPCS400	18" w x 26¼" d x 25" h, w/o Casters	\$ 274.00

CODE	ULTRA CAMCARRIER® — 1 Compartment	PRICE EA.
UPC400	18" w x 25" d x 24¾" h, w/o Casters	\$ 300.00
300MPC	16½" w x 24" d x 23⅞" h, w/o Casters	\$ 230.00

CODE	ULTRA CAMCARTS® — 2 Compartment	PRICE EA.
UPC600	20½" w x 27⅞" d x 45" h, 5" Casters	\$ 633.00
UPC800	20½" w x 27⅞" d x 54" h, 6" Casters	\$ 748.00
UPC1200	28½" w x 32¼" d x 45½" h, 6" Casters	\$ 965.00
UPC1600	28¾" w x 33⅜" d x 54⅞" h, 6" Casters	\$ 1394.00

## Camcarrier® & Camcart® Accessories



CODE	THERMOBARRIER®	CASE PACK	PRICE EA.
300DIV	For 300MPC & UPC600, Coffee Beige	1	\$ 40.84
400DIV	For UPC400 & UPC800, Gray	1	\$ 40.84
1200DIV	For UPC1200, Dark Brown	2	\$ 40.84
1600DIV	For UPC1600, Slate Blue	2	\$ 40.84

CODE	CAMCHILLER®	CASE PACK	PRICE EA.
CP1210	Half Size, Cold Blue	1	\$36.48
CP1220	Full Size, Cold Blue	1	\$ 70.79

CODE	CAMWARMER®	CASE PACK	PRICE EA.
1210PW	For UPC600 & UPC800, Granite Gray	1	\$ 104.00

CODE	DIVIDER BARS	CASE PACK	PRICE EA.
DIV12	12" Bar For Camcarrier®	3	\$ 2.29
DIV20	20" Bar For Camcarrier®	3	\$ 5.46

CODE	CAMDOLLY®	CASE PACK	PRICE EA.
CD400	For UPC400, 300lb Cap, 20¾" x 27½" x 9", 5" Casters: 2 Fixed, 2 Swivel, 1 w/Brake	1	\$ 176.00



## Top Loading Pan Carriers

- Retains internal temperature for hours
- Nylon latches
- Interlock stacking during transport and storage
- Polypropylene w/foam insulation



CODE	DIMENSIONS	CAPACITY	PRICE EA.
UPCSS160	24½"w x 16½"d	Holds 1 Full Size 6"d Pan, 9½"h	\$ 144.00
UPCS140	25½"w x 17½"d	Holds 1 Full Size 4"d Pan, 8½"h	\$ 139.00
UPCS160	25½"w x 17½"d	Holds 1 Full Size 6"d Pan, 10¼"h	\$ 144.00
UPCS180	25½"w x 17½"d	Holds 1 Full Size 8"d Pan, 12"h	\$ 154.00
UPC100	26½"w x 18"d x 15¾"h	Holds From (1) 8"d Pan to (3) 2½"d Full Size Pans	\$ 226.00

## Camtherm® Bulk Food Holding Cabinets

- 48% more energy efficient than metal cabinets
- Maintains hot or hot/cold temperature with excellent moisture retention
- Tough, 1-piece seamless double-wall polyethylene cabinet
- Fahrenheit thermometer
- Universal chrome plated tray rails
- Doors swing open 270°
- 6" swivel front casters w/brake
- 110V



TALL, DOUBLE CABINET



CODE	Low, Single - Holds (12) 12" x 20" x 2½"d Food Pans	PRICE EA.
CMBH1826LF	Hot Only, 10" Fixed Rear Casters	\$ 3025.00
CMBHC1826LF	Hot or Cold, 10" Fixed Rear Casters	\$ 6203.00

CODE	Tall, Double - Holds (24) 12" x 20" x 2½"d Food Pans	PRICE EA.
CMBH1826TSF	Hot Only, 6" Fixed Rear Casters	\$ 4726.00
CMBHC1826TBF	Hot or Cold, 10" Fixed Rear Casters	\$ 8713.00

InStock Colors: Granite Gray (191), Granite Green (192), Granite Sand (194)

## Combo Cart™ Plus

- Passive hot or cold holding for up to 4 hours
- Durable, rust-free, dent-free, one-piece molded polyethylene body filled with polyurethane foam insulation that easily holds food at safe temperatures and out of the danger zone
- Adjustable stainless steel Universal rails take the guesswork out of choosing systems each time
- Holds full and half size pans, trays or pizza boxes
- ELECTRIC: Features all of the above PLUS Separate, dual compartments with heaters on both doors to maximize food quality
- Heaters can be turned on or off for hot or cold holding
- 27½" x 33½" x 65½"
- Color: Charcoal Gray



CODE	HEATED CAMCART DESCRIPTION	PRICE EA.
CMBP	Non-Electric	\$ 2730.00
CMBPH	Electric, 110V	\$ 3895.00

## Camwear® Food Pans & Covers

- For storage, transportation and serving display
- Virtually unbreakable polycarbonate construction
- Withstands temperatures from -40° to 210°F
- Both standard and metric graduation markings
- Griplids®, FlipLids®, Notched and Handle Lids Available!



CODE	FULL SIZE	DEPTH	PRICE EA.
12CW	12¾" x 20½"	2½"d	\$ 10.23
14CW	12¾" x 20½"	4"d	\$ 13.01
16CW	12¾" x 20½"	6"d	\$ 15.72
18CW	12¾" x 20½"	8"d	\$ 18.77
10CWC	Flat Cover		\$ 8.66
10CWCH	Cover w/Handle		\$ 8.66
10CWCHN	Notched Cover w/Handle		\$ 8.66
10CWD	Drain Shelf		\$ 7.46
13CLRCW	Colander	3"d	\$ 12.96
15CLRCW	Colander	5"d	\$ 15.72

CODE	HALF SIZE	DEPTH	PRICE EA.
22CW	10½" x 12¾"	2½"d	\$ 5.70
24CW	10½" x 12¾"	4"d	\$ 7.09
26CW	10½" x 12¾"	6"d	\$ 9.08
28CW	10½" x 12¾"	8"d	\$ 11.55
20CWC	Flat Cover		\$ 4.55
20CWCH	Cover w/Handle		\$ 4.55
20CWCHN	Notched Cover w/Handle		\$ 5.29
20CWL	Flip Lid		\$ 7.14
20CWLN	Notched Flip Lid		\$ 7.14
20CWD	Drain Shelf		\$ 3.48
23CLRCW	Colander	3"d	\$ 7.09
25CLRCW	Colander	5"d	\$ 9.12

CODE	HALF SIZE LONG	DEPTH	PRICE EA.
22LPCW	6¾" x 20¾"	2½"d	\$ 7.80
24LPCW	6¾" x 20¾"	4"d	\$ 9.72
20LPCWC	Flat Cover		\$ 6.64

CODE	THIRD SIZE	DEPTH	PRICE EA.
32CW	6½" x 12¾"	2½"d	\$ 4.29
34CW	6½" x 12¾"	4"d	\$ 5.90
36CW	6½" x 12¾"	6"d	\$ 6.88
38CW	6½" x 12¾"	8"d	\$ 8.73
30CWC	Flat Cover		\$ 3.34
30CWCH	Cover w/Handle		\$ 3.34
30CWCHN	Notched Cover w/Handle		\$ 4.55
30CWL	Flip Lid		\$ 6.11
30CWLN	Notched Flip Lid		\$ 6.11
30CWD	Drain Shelf		\$ 3.23
33CLRCW	Colander	3"d	\$ 5.90
35CLRCW	Colander	5"d	\$ 6.88

CODE	FOURTH SIZE	DEPTH	PRICE EA.
42CW	6¾" x 10½"	2½"d	\$ 4.33
44CW	6¾" x 10½"	4"d	\$ 5.11
46CW	6¾" x 10½"	6"d	\$ 5.90
40CWC	Flat Cover		\$ 3.02
40CWCH	Cover w/Handle		\$ 3.02
40CWCHN	Notched Cover w/Handle		\$ 3.02
40CWD	Drain Shelf		\$ 2.68

CODE	SIXTH SIZE	DEPTH	PRICE EA.
62CW	6¾" x 6½"	2½"d	\$ 3.18
64CW	6¾" x 6½"	4"d	\$ 3.58
66CW	6¾" x 6½"	6"d	\$ 4.77
60CWC	Flat Cover		\$ 2.40
60CWCH	Cover w/Handle		\$ 2.62
60CWCHN	Notched Cover w/Handle		\$ 2.62
60CWL	Flip Lid		\$ 3.48
60CWLN	Notched Flip Lid		\$ 3.48
60CWD	Drain Shelf		\$ 1.44
63CLRCW	Colander	3"d	\$ 3.58
65CLRCW	Colander	5"d	\$ 4.77

CODE	NINTH SIZE	DEPTH	PRICE EA.
92CW	4¼" x 6½"	2½"d	\$ 3.23
94CW	4¼" x 6½"	4"d	\$ 3.90
90CWC	Flat Cover		\$ 2.66

Case Pack: 6 InStock Color: Clear (135).



## Non-Skid Versa Camtrays®

- Provides a better grip for safer meal delivery
- Dishwasher safe in low and high temperatures
- All Non-Skid Trays have a 2 year prorated warranty
- Versa Dietary trays offer a larger surface area and a lower profile which increases patient comfort



CODE	NON-SKID VERSA CAMTRAYS®	PRICE EA.
1418VC	14" x 18" Rectangular	\$ 20.87
1520VC	15" x 20" Rectangular	\$ 23.32

CODE	NON-SKID VERSA DIETARY CAMTRAYS®	PRICE EA.
1418VDC	14" x 18" Rectangular	\$ 20.87
1520VDC	15" x 20" Rectangular	\$ 23.32

CODE	ROOM SERVICE NON-SKID VERSA CAMTRAY	PRICE EA.
1520VCRST	15" x 20" Rectangular	\$ 24.55

Case Pack: 12

InStock Colors: Black w/Pebbled Black (382), Pearl Gray w/Titan (381) and Ivory w/Sahara (380).

## Camtread® Trays

- Made of heavy-duty, highly durable fiberglass with a thick molded in, non-skid surface
- Thick aluminum wire molded into the rim eliminates warping and cracking



CODE	DIMENSIONS	CASE PACK	PRICE EA.
1400CT	14" Round	12	\$ 11.14
1600CT	16" Round	12	\$ 14.68
2500CT	19¼" x 23½" Oval	6	\$ 26.35
2700CT	22" x 26½" Oval	6	\$ 29.67

InStock Colors: Black Satin (110) or Tavern Tan (138).

## Hotel Room Service Trays

- Lightweight, weighs up to 30% less than wooden room service trays
- Steel compound construction



CODE	DIMENSIONS	PRICE EA.
1525RST	15½" x 25"	\$ 16.61

Case Pack: 12

InStock Colors: Walnut (376), Venge (384) or Brushed Steel (612).

## H-Pans™ High Heat Food Pans & Covers

- Use one pan from prep to cooler to oven to steam table
- Ideal for use in microwave ovens, steam tables and chafing dishes
- High heat material withstands temperatures from -40° to 375°F
- Great for flash freezing, cooking and reheating
- Precisely designed to Gastronorm GN specifications
- Non-stick smooth interior surface increases yields and promotes easy cleaning
- Pans stack neatly, without wedging or sticking
- Uniform ½" flange ensures the right fit in prep and steam tables
- GripLids®, FlipLids®, Notched and Handled lids available!
- Other sizes also available!



CODE	FULL SIZE	DEPTH	PRICE EA.
12HPH	12¾" x 20⅞"	2½"d w/Handles	\$ 27.68
12HP	12¾" x 20⅞"	2½"d	\$ 24.09
14HP	12¾" x 20⅞"	4"d	\$ 29.14
16HP	12¾" x 20⅞"	6"d	\$ 37.88
13CLRHP	Colander	3"d	\$29.14
15CLRHP	Colander	5"d	\$37.88

CODE	HALF SIZE	DEPTH	PRICE EA.
22HP	10⅞" x 12¾"	2½"d	\$ 12.05
24HP	10⅞" x 12¾"	4"d	\$ 15.62
26HP	10⅞" x 12¾"	6"d	\$ 20.00
23CLRHP	Colander	3"d	\$ 15.62
25CLRHP	Colander	5"d	\$ 20.00

CODE	THIRD SIZE	DEPTH	PRICE EA.
32HP	6⅞" x 12¾"	2½"d	\$ 10.09
34HP	6⅞" x 12¾"	4"d	\$ 13.02
36HP	6⅞" x 12¾"	6"d	\$ 17.71
30HPL	Flip Lid		\$ 11.89
30HPLN	Notched Flip Lid		\$ 11.89
33CLRHP	Colander	3"d	\$ 13.02
35CLRHP	Colander	5"d	\$ 17.71

CODE	FOURTH SIZE	DEPTH	PRICE EA.
42HP	6⅞" x 10⅞"	2½"d	\$ 8.73
44HP	6⅞" x 10⅞"	4"d	\$ 10.79
46HP	6⅞" x 10⅞"	6"d	\$ 13.75



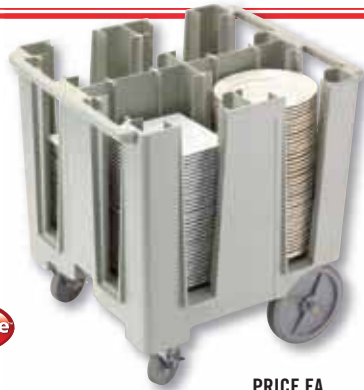
CODE	SIXTH SIZE	DEPTH	PRICE EA.
62HP	6⅞" x 6⅞"	2½"d	\$ 6.82
64HP	6⅞" x 6⅞"	4"d	\$ 8.23
66HP	6⅞" x 6⅞"	6"d	\$ 9.99
60HPL	Flip Lid		\$ 6.80
60HPLN	Notched Flip Lid		\$ 6.80
63CLRHP	Colander	3"d	\$ 8.23
65CLRHP	Colander	5"d	\$ 9.99

CODE	NINTH SIZE	DEPTH	PRICE EA.
92HP	4¼" x 6⅞"	2½"d	\$ 5.17
94HP	4¼" x 6⅞"	4"d	\$ 6.06

Case Pack: 6 InStock Color: Amber (15) or Black (110).

## Versa® Dish Caddies

- Durable, polyethylene exterior will not rust, crack, dent or chip
- Plated steel rear axle supports 500 lb
- Open access - easy loading/unloading
- Molded-in handles on both ends
- 5" front swivel casters/brake & 10" rear wheels
- Vinyl cover included
- 30½" x 27" x 31¾"



CODE	DESCRIPTION	PRICE EA.
DCS1125	11¼" Max Round, 9½" Max Square, 4 Columns	\$ 541.00
DCS950	9½" Max Round, 8" Max Square, 4 to 5 Columns	\$ 518.00

InStock Colors: Black (110), Dark Brown (131), Slate Blue (401) and Speckled Gray (480).

## Adjustable Dish Caddy

- Easy to clean and won't chip, dent or rust
- 6 adjustable dividers that store 4⅞" to 13" plates or bowls
- Vinyl cover included
- Big wheels for easy handling



CODE	DIMENSIONS	PRICE EA.
ADCS	28⅞" x 37⅞" x 31⅞"	\$ 659.00

## Camrack® Dishracks

- Ergonomically designed to reduce glassware breakage and lifting injuries
- Stacks with all major manufacturers' racks
- No screws, rivets or bolts means no rust



25SWG



CDR2020

CODE	DESCRIPTION	CASE PACK	PRICE EA.
FR258	Full Size Flatware Rack	6	\$ 17.26
8FB434	Half Size Flatware Rack - 8 Compartments	6	\$ 20.49
PR314	Full Size Peg Rack	6	\$ 17.26
PR59314	Full Size Peg Rack, 5" x 9"	6	\$ 17.15
20S638	20 Comp. Glass Rack, Up to 6⅞" h Glasses	3	\$ 38.72
20S800	20 Comp. Glass Rack, Up to 8½" h Glasses	2	\$ 46.30
25S318	25 Comp. Glass Rack, Up to 3⅞" h Glasses	5	\$ 24.38
25S434	25 Comp. Glass Rack, Up to 5¼" h Glasses	4	\$ 32.55
25S534	25 Comp. Glass Rack, Up to 6⅞" h Glasses	4	\$ 33.94
25S638	25 Comp. Glass Rack, Up to 6⅞" h Glasses	3	\$ 38.72
25S738	25 Comp. Glass Rack, Up to 7¼" h Glasses	3	\$ 41.88
25S800	25 Comp. Glass Rack, Up to 8½" h Glasses	2	\$ 46.30
30S638	30 Comp. Glass Rack, Up to 6⅞" h Glasses	3	\$ 39.47
30S800	30 Comp. Glass Rack, Up to 8½" h Glasses	2	\$ 47.13
BR258	4" Full Base Rack	6	\$ 16.02
DRC2020	Dishrack Cover	1	\$ 26.24
CDR2020	Camdolly, 4" Casters	1	\$ 93.90
25SWG	Water Glass Filler, Fills 25 Glasses w/ Ice Simultaneously. Ensures Ice Will Fall Directly Into Glass.	1	\$ 39.32

## CamSquare® Storage Containers, Lids & Seal Covers

- Virtually unbreakable polycarbonate construction
- Clear containers with easy to read graduations
- Stackable • Dishwasher safe
- Stain and odor resistant



COLOR-CODED LIDS SHOWN ON POLY CONTAINERS

CODE	CAMSQUARE® CONTAINERS	PRICE EA.
2SFSCW	2 qt	\$ 4.41
4SFSCW	4 qt	\$ 6.74
6SFSCW	6 qt	\$ 8.73
8SFSCW	8 qt	\$ 10.25
12SFSCW	12 qt	\$ 13.55
18SFSCW	18 qt	\$ 20.11
22SFSCW	22 qt	\$ 25.49

Case Pack: 6 In Stock Color: Clear (135)

CODE	SEAL COVERS	PRICE EA.
SFC2SCPP	Fits 2 & 4 qt	\$ 1.86
SFC6SCPP	Fits 6 & 8 qt	\$ 2.31
SFC12SCPP	Fits 12, 18 & 22 qt	\$ 3.30

Case Pack: 6 In Stock Color: Translucent (190)

CODE	COLORED LIDS	PRICE EA.
SFC2	Fits 2 & 4 qt, Green (452)	\$ 1.86
SFC6	Fits 6 & 8 qt, Winter Rose (451)	\$ 2.31
SFC12	Fits 12, 18 & 22 qt, Midnight Blue (453)	\$ 3.33

Case Pack: 6



## Camwear® Food Boxes, Lids & ColanderKit™

- Virtually unbreakable clear polycarbonate construction
- Withstands temp. from -40° to 210°F making it ideal for storing a variety of food
- Dishwasher safe, stackable and easy to clean
- SlidingLid™ available for easy access
- SlidingLid™ Covers & Colander Kit not NSF Listed



CODE	FOOD BOXES	CASE PACK	PRICE EA.
12183CW	12" x 18" x 3½"d, 1.75 gal	6	\$ 11.59
12186CW	12" x 18" x 6"d, 3 gal	6	\$ 14.62
12189CW	12" x 18" x 9"d, 4.75 gal	6	\$ 19.56
18263CW	18" x 26" x 3½"d, 5 gal	6	\$ 21.00
18266CW	18" x 26" x 6"d, 8.75 gal	6	\$ 27.20
18269CW	18" x 26" x 9"d, 13 gal	4	\$ 35.79
182612CW	18" x 26" x 12"d, 17 gal	4	\$ 43.59
182615CW	18" x 26" x 15"d, 22 gal	3	\$ 51.43

CODE	LIDS	CASE PACK	PRICE EA.
1218CCW	12" x 18" Flat Lid	6	\$ 7.17
1826CCW	18" x 26" Flat Lid	6	\$ 14.36
1218SCCW	12" x 18" Sliding Lid™	6	\$ 15.29
1826SCCW	18" x 26" Sliding Lid™	6	\$ 25.61

CODE	COLANDERKIT™	CASE PACK	PRICE EA.
18268CLRKIT	Includes (1) 8"d Colander, (1) 18" x 26" x 9" Food Box, (1) 18" x 26" SlidingLid™	1	\$ 100.00

Prices are F.O.B. factory. Additional shipping charges may apply. Please check with our customer service department as some items may need to be special or factory ordered. Allow 2 weeks for delivery. In some instances, cases may not be broken or broken case charges may apply. Sale prices are not valid with any other offer or coupon. Not responsible for typographical errors.

**PRICES EFFECTIVE MARCH 1 - MARCH 31, 2013**

